

News & Views

THE COMMUNITY NEWSLETTER FOR PAPWORTH EVERARD



**Stay Safe
Stay Home
Save Lives**

MAY 2020

1750 COPIES DISTRIBUTED MONTHLY

ISSUE NO 05-20



USEFUL CONTACTS

NEWS & VIEWS

Janet/Peter Dobson
Tel: 01480 831066
adverts@pendrill.net

POLICE COMMUNITY - SUPPORT OFFICER
Emergency - 999 - Non Emergency - 101
e-mail: thomas.baugh@cambs.pnn.police.uk

COMMUNITY FIRE SAFETY OFFICER
01954 714030 - Mondays Only
Emergency 999

SOUTH CAMBRIDGESHIRE DISTRICT COUNCIL
03450 450500 - 01954 713000

PARISH CLERK - VILLAGE HALL
01480 830360
clerk@papwortheverardpc.org.uk

DOCTORS SURGERY
01480 830888

THE TEAM VICAR
01480 831915

PENDRAGON PRIMARY SCHOOL
01480 830267

PAPWORTH TRUST DISABILITY CHARITY
01480 357200

PAPWORTH TRUST HOUSING MAINTENANCE
0330 678 0008

PAPWORTH FC - BRYAN JOHNSON
01480 830768

BLASTERS - COLTS FOOTBALL
David Pope - 01954 267 391
mail@papworthblasters.com

TENNIS
papworthtennis@hotmail.co.uk

BOWLS
Dave Richardson - 01480 830867

CAMBS TAI CHI CLUB
www.cambs-taichi.org.uk
07415 267908

PAPWORTH HERITAGE CENTRE
becky.proctor@papworth.nhs.uk
Telephone: 01480 364245

THE VARRIER JONES FOUNDATION
01480 831801

THE ASTRONOMY CLUB
01480 830729
peter@cheere.demon.co.uk

ALLOTMENT ASSOCIATION
enquiries.peaa@gmail.com

PENDRAGON PRE-SCHOOL
01480 839076

PAPWORTH LIBRARY
0345 045 5225

DAISY CENTRE
01480 831423

PAPWORTH EVERARD WOMEN'S INSTITUTE
Pat Martin - 01480 350355
e-mail pat@woodpecker6.co.uk

VARRIER JONES SOCIAL CLUB
Audry Reid - 01480 831053

**DO YOU NEED SOME EXTRA HELP?
ARE YOU FEELING ISOLATED OR ALONE?
A TEAM OF LOCAL PEOPLE ARE OFFERING
THEIR HELP TO ENSURE EVERYONE IS
LOOKED AFTER DURING THESE HARD TIMES**



**NO REQUEST TOO SMALL
PLEASE CONTACT US ON**

07469 876467

07930 071714

(PHONES WILL BE ON 8AM - 8PM)

PAPWORTHCOVID19@GMAIL.COM

CORONAVIRUS IMPACT BINS

The green bin collections are being reintroduced from Monday 4 May. Households would usually have 2 green bin collections between 4 and 30 May but, due to the impact of national social distancing measures, only one collection will be guaranteed. Crews will try to empty more bins on each occasion if they can.

<https://www.scambs.gov.uk/bins/>

BIN COLLECTION DATES


Thu 7 May 2020	●		
Fri 15 May 2020		●	●
Thu 21 May 2020	●		
Fri 29 May 2020		●	
Thu 4 Jun 2020	●		
Thu 11 Jun 2020		●	●
Thu 18 Jun 2020	●		

Please Note: The Red cells identify different collection days to a Thursday

CONTACT DETAILS NEWS & VIEWS

www.newsandviewspapworth.co.uk

adverts@pendrill.net

 News & Views - Papworth Everard

Editorial deadline for next edition is 27th May

Cover Pictures "Refurbished Papworth Hall and Door Knockers" taken by the Editors

PAPWORTH EVERARD PARISH COUNCIL REPORT

Parish Clerk: Sarah Cruse

Telephone: (01480) 830360

E-mail: clerk@papwortheverardpc.org.uk

COVID-19 – Parish Council Meetings

Parish Council meetings which had been suspended due to the Coronavirus and requirement for social distancing, are back up and running thanks to technology !

After a practice run to make sure everyone could connect and get the hang of how it works, the Parish Council held its first virtual meeting via Zoom on Wednesday 15th April.

As this was a success, it was agreed that the council would hold all Council and Committee meetings via Zoom until such time as it is safe and appropriate to meet in person again.

Members of the public are, as usual, permitted to attend any of the Parish Council's meetings should they wish, albeit remotely. If you would like to attend please contact the Clerk for the information required to connect.

Due to the current situation, the decision has been made to cancel the Annual Village Meeting which is usually held in the Village Hall and is open to all residents of the village to attend. This had been scheduled for Wednesday 27th May.

Paddling Pool

It is with regret that the Parish Council has had to make the decision not to open the Paddling Pool this summer.

The paddling pool requires maintenance and repairs prior to opening each summer and with the current situation it is not possible for these to be undertaken.

With social distancing rules likely to still be in place for some time to come, the Council agreed that it would not be appropriate to provide a facility where people are able to congregate at close quarters.

Papworth Coronavirus Support Group

The Parish Council are delighted to be able to assist the Papworth Coronavirus Support Group set up in the village and have purchased hand sanitiser, face masks and disposable gloves to help keep the volunteers safe as they provide assistance and deliveries of medication to the more vulnerable members of the village.

**At this difficult time please stay safe, take care and be sensible
as a village we will get through this !**

Varrier Jones Social Club



Well here we are again, another month gone but a very different month to our usual activities. Who would have thought a little while back that I would be looking forward to going to Morrisons to shop, well I am, can't wait to meander around the isles looking at all the products that I would not normally notice just for the fun of it – see how sad I have become and that is just in 6 weeks!!

I hope you are taking the opportunity to thank all our key workers with the clapping on Thursday evenings at 8pm – it is good to hear from all around us. I have just waved to the dustman and got a lovely smile and wave back, thank you to him, that brightened my day – all of you who are out on your daily exercise why not give a quick look at the windows to see if anyone stuck in is looking out and could do with a smile and wave – I know how good that can feel.

Unfortunately Jenny has had to cancel all our booked entertainment for the time being but I thought I would just include a photo of "Two in Time" who would have been entertaining us at our May Meeting with their repertoire of songs and jokes, many of you will no doubt remember them from the last time they visited us or indeed at the Day Centre, a firm favourite there too. Having



spoken to Carol she tells me that this photo was taken a couple of years ago when they attended a "40s" celebration. Let's hope that we will be able to re-book this duo before too long.

Unfortunately, our June Meeting for the "Strawberry Tea" is cancelled as is the proposed Trip to the Seaside at Sheringham.

No update as yet for our Theatre Trip for this year to see "Strictly the Musical" at Milton Keynes on the Wednesday 21 October at 2.30pm. The Coach will leave Papworth at 11am to allow time for Lunch before the Show. Tickets cost £27 which includes the coach. Due to demand we are now looking to purchase further tickets and get a larger coach but, for the time being, bookings are on hold. However, if you would like to add your name to the "drop out" list please contact us in the usual way.

Remember to make a note that when we are all "free" again why not come and join us? Make some new friends or catch up with some old ones for an afternoon of entertainment and chat. Meetings are held on the first Friday of each month. Start time is 1.30pm in The Studio, Pendrill Court. Admission is £3 for Members, £4 for Visitors. The Annual Membership is only £5. Where else could you get anything like this for the price?

Report from Papworth Surgery

We hope you are all coping with the lockdown, and not getting too depressed. At least the weather has been beautiful (even if the gardeners are beginning to grumble about dry earth... but I have enjoyed some lovely off-road cycling!).

It's been super to have the support of so many volunteers, helping deliver medicines to the elderly/ shielding patients, doing shopping, keeping isolated folk company with telephone calls. It's shown real spirit of cooperation and caring that is wonderful. I do hope we continue to look after each other after all this is over.

Pharmacy:

There has been a terrific demand for medicines; in a normal month we dispense 10,000 items in a month; this often rises to 11,000 in December. However in March we dispensed 13,000 items, and we got terribly behind, so that it has proved very hard to catch up. Despite working like Trojans, the ladies in the pharmacy found they were dispensing prescriptions dated 1 week earlier, so of course when patients came to collect their medication 6 or 7 days after ordering, it was often not ready; this was compounded by the large number of items that went "out of stock" at our wholesalers. Inhalers in particular are proving very hard to get hold of; I understand that demand for inhalers increased fourfold in March, and the supplier drug companies cannot get stock to the wholesalers fast enough in order to supply chemists and dispensing doctors.

However, as at 17th April, I am pleased to report that the pharmacy have managed to pretty much catch up, and are dispensing repeat prescriptions dated just one day earlier. I hope that there will be less cause for grumbles about medicines not prepared in time over the coming months.

GP Appointments:

In the current climate of social distancing we do make a telephone consultation the first stop for all our patients; we can turn this into a video consultation, or invite you to come and be seen in person. In truth we are seeing very few patients in the surgery, and there has been no need to use the waiting room. But we have seen some very sharp and helpful photos of rashes sent in on smartphones: these become attached to your confidential record.

One cause for concern: have noticed a considerable reduction in people telling us about symptoms that would cause concern, for instance change in bowel habit; rectal bleeding; weight loss;

coughing up blood; breathlessness; even chest pains. We would encourage you to call us if you have such symptoms; the NHS is still operating normally for such symptoms, that may be pointers to more serious disease!

Coronavirus testing

As many of you will know, I did suffer from the Coronavirus in mid-March. As one of the 100 Public Health England "spotter" GP surgeries, we take swabs looking for flu viruses to inform the statisticians about what viruses are circulating during the winter. This year we have been asked to keep swabbing and the Public Health lab looks for Coronavirus, so please do be in touch if you seem to have likely symptoms of Coronavirus (fever of >37.8, cough, commonly with loss of smell and taste, and exhaustion). So, I was able to swab myself and do a test, which returned a positive result after a week. I was unwell for about 10 days with persistent fever, mild breathlessness, and exhaustion... an unusual state for me; I kept having to lie down and have a rest at odd times in the day! My wife had a less serious illness for 5 days, and my 2 daughters living at home remained well.

What you may not know is that 5 other members of staff also had documented Coronavirus infection, but all are now back at work.

Regrettably there are no proven treatments for Coronavirus, but there does seem to be a role for the antimalarial drug Hydroxychloroquine in reducing the severity of the disease, if given early in the illness. We can advertise that we are about to be part a nationwide trial to test this drug in Coronavirus infections. So, if you are over 50 and appear to develop Coronavirus (fever, cough, breathlessness) please do be in touch with us within a few days of becoming unwell, and you may be eligible to enter this trial. Be warned though that 50% of participants will be randomized to no treatment!

Retirement:

Among all this, I have decided to put off retirement (planned for August) for 6 months, but I will be dropping my commitment to the Practice to 2 days a week from August to facilitate a transition to new management.

Here's hoping for a return to something nearer normality quite soon!

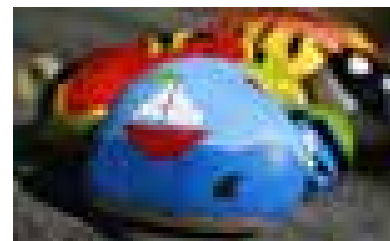
Best wishes to all. - David Cronk



Friends of Pendragon Primary School

With the majority of children off school, social events cancelled for foreseeable weeks ahead, and home schooling becoming the new normal, Friends of Pendragon thought it would be nice to give the children and families another incentive to get out and about in the village for their daily exercise, so during May we will be hiding some little goody bags for the children around the village.

We are lucky to have such lovely places to explore right on our doorsteps, so we hope you'll get out and enjoy the good weather and try and find some prizes.



If you find one, make sure to send us a picture on our Facebook page! We would love to see what you're all getting up to at the moment.

It is great to see so many painted rocks in the village,

and the children are really enjoying painting and finding them. There are some really imaginative designs around, and both children and adults are getting creative and having fun with them.

Don't forget that you can still support the school during lockdown! Many of us are using online shopping at the moment, and if you make your purchases via the Easyfundraising app, the school will receive a percentage of whatever you spend. Most of the main high street retailers are on there, along with Amazon and many more.

<https://www.easyfundraising.org.uk/>



We hope we can all see each other again very soon, but be sure to stay safe in the meantime.

On your walk around Papworth

Take the opportunity to pause and reflect whilst on your daily exercise routine around the village.



Points to ponder on your walk

You start from home and there is no set route for this walk. You are invited to pause a moment at each of the following places when and if you pass them, in the order that suits you.

The shops and post office

Consider those who stock the shelves and who serve us with the food and provisions we need. Think of those who need help with their shopping.

The surgery and pharmacy

Think of the medical care and support provided by the doctors, nurses, chemists and support staff. Consider those patients served by the surgery and all their individual needs and concerns.

The woods

Think of the beauty of nature, the changing seasons and the paths we can take to explore and to renew our spirits.

The hospital site

Think of the NHS and all the skill and compassion shown by doctors, nurses and care workers. Think of the conditions they work under and the compassion we need to show for them.

Papworth Hall

Think of the history of the village, the part played by pioneers to cure T.B. and the village settlement they established. Consider the lives changed and the community that was made here.

Employment area

Think of the variety of jobs and services based here, the to and fro of products and materials, the skills and activities of those employed and the households reliant on their wages.

The housing areas

Think of those who live in Papworth Everard, the rich diversity of our village population. The hopes and fears of our neighbours, the opportunity to make new friends and offer support where needed.

The parish church

Think about the importance of faith and hope in our lives. The baptisms, weddings and funerals that have occurred here. The Sunday worship that will return here soon.

The school

Think about the children and teaching staff who attend here, the precious gift of learning and nurture. The hopes of both children and parents for the future.

Only leave your home for essential shopping, medical needs and exercise once a day. You can travel to and from work if absolutely necessary

Public gatherings of more than two people are banned - excluding people you live with. Don't visit other people's houses or socialise outside your home.

Maintain a distance of at least 2 metres between people not in your household.



I* Listed Building and dates back to the 14th century. The current tower was erected in the 19th century.



and provides an outstanding display of bluebells in late April/early May.

Leaflet produced by David Potter for the Papworth Team Ministry - March 2020

Stay Safe

Stay Home

Save Lives

Church Notices

St Peter's Church Services

No Services Until Further Notice

Roman Catholic Mass

(Latin Rite)

No Services Until Further Notice



Facing our fears

We are now in the extended period of 'lockdown' arising from the coronavirus pandemic. So much has changed. I failed to recognise a friend just ahead of me in the queue to go into a supermarket for essential provisions – because he was wearing a face mask. Perhaps the biggest change is the climate of fear we are dealing with every day; fear of catching the virus, fear whether jobs or businesses will survive, fear for the welfare of a loved one now struggling with the isolation, fear for the risks being faced by those we know working on the front-line, fear of so much that is unknown.

The accounts of Jesus meeting up with his disciples after the resurrection were marked by a climate of similar fear and uncertainty. His presence did not alter a host of their

uncertainties, but he breathed into them a new confidence about how they could face the future with renewed vision, purpose and the promise of his ongoing presence.

One of the hallmarks of Christian faith and understanding is our confidence in the goodness of God. We can start to work that out in how we face the changed world in which we now live.

For example – given the challenge of social distancing everyone is facing – being thankful this has come upon us in a period of fine weather with daylight hours increasing is, something many of us can appreciate. Witnessing the upsurge of support in our communities for one another is heart-warming and reminds us to be much more appreciative that all human beings carry within us the image and nature of God seen in the explosion of sacrifice and compassion around us.

Equally, the losses among us are felt more keenly in smaller communities than in the relative anonymity of larger towns and cities. This helps us weep with those who weep and to let them know we are standing with them emotionally even though we can't draw close and hug them as we might wish.

As the local church for your community, we are continuing to meet. The core diet is the opportunity to join daily gatherings - Monday to Saturday at 8.15am and Sundays at 10.00am; courtesy of Zoom. For more information and how to access these gatherings, see the home page of our website, www.papworthteamchurches.org.

We are all looking forward to resuming much of what we call "normal life". As this becomes possible let's not lose the preciousness of those conversations we have enjoyed in the course of our daily exercise, and the realisation that together is far better than living isolated lives. In such things we have glimpses of the divine – how He walks with us and talks with us in the journey of life.

Nigel di Castiglione - Team Rector



Hilton Methodist Church

I would normally have sent my details of the forthcoming services at Hilton Methodist Church to be printed, but due to the Coronavirus crisis the chapel will be closed and there won't be any formal services for the time being.

For this reason, our circuit is providing worship materials for people to use in their own homes and details of live-streamed services via the website:

www.snahmc.org.uk.

There is also a Facebook page www.facebook.com/stivesmeths/ where our minister, Rev Nick Witham, has posted a video with a children's story amongst other things. He is planning to add more children's stories in due course.

Timothy Foster Burgess MBE JP



Tim Burgess, a well loved and widely respected member of the local community, sadly died in Hinchingbrooke Hospital on 8th April 2020.

He grew up in Yorkshire and after leaving school in 1964, Tim went into the hotel industry firstly at the Goodwood Park Hotel in Singapore, before becoming a Deputy Manager for the Trust House Forte group. He then progressed onto The Savoy, The Dorchester, and The Churchill Hotels in London.

It was at the Trust House Forte in Tunbridge Wells that Tim met his future wife, Jenny, who was then working at the hotel. They were later married on 22nd April 1972 at St Oswald's Church in Collingham, Yorkshire.

In the mid-seventies, the family moved to Stockholm for 3 years, where Tim worked for the Sheraton Group, before returning home to work for the family company based in Leeds and then to form his own software company. The company was granted a Royal Warrant in 1994, as supplier of software to Her Majesty the Queen and her Armed Forces.

Tim was an enthusiastic member of the Methodist Church and, later on, of the Church of England. Despite a busy business career, he always found time for charitable works. In 2004, Tim and Jenny moved to Cambridgeshire at the time when Tim became the CEO of the Edward Storey Charity in Cambridge.

Tim played a full part in the life of St Peter's Church in Papworth, having been a resident here for 16 years, as well as in the Papworth Team and the wider Ely Diocese. He sat on the Ely Diocesan Board of Finance and, for the last few years, was a Licensed Lay Minister.

In 2017 Tim was invested with the MBE for his services to the Charitable Sector and the Church of England. Then two years later, he was honoured by receiving Maundy Money from Her Majesty the Queen.

Tim was one of life's adventurers. A keen qualified Yacht Master, he instilled a joy of being on the water with those lucky enough to crew with him, who were also rewarded with cordon bleu dishes rustled up from the tiny galley kitchen below.

Despite having Parkinson's, he never let his slowly deteriorating health affect his positivity, care for others and his love and devotion for his family.

He is survived by his wife Jenny, his two sons, Chris and Richard and his four grandchildren.

Jenny would like to thank all those who have sent their condolences and shared their many memories of all that Tim did and meant in their lives.

THE MEAGER COMPENSATIONS

In isolation, the meager compensations:

Essential shopping,

Medical necessities,

Daily exercise,

All at a safe social distance.

Out along the village paths once a day,

Exploring the landscape of Spring.

The sloping grassland,

Chequered snake's-head fritillary and orange-tip butterflies.

The wrapped up stand of young trees,

Around the creaking copse,

And along the perimeter of the estate.

The almost silent bypass,

Defining our settlement Bailey.

The fresh bob and sway of weeping willows,

Regular sentinels to guard the streets and byways.

Piggery wood, deep in bluebells and yellow ranunculus,

In light and in shadow.

The extravagance of heavy blossom

In gardens and hedgerows.

The early green shoots of crops in the fields,

Careful lines set on the crusty brown earth.

And all this under the sweet halo of birdsong.

David Potter

How is your church helping to bring hope during 'lockdown'

For the moment Church buildings are closed...
but the church continues...

CHURCH @ HOME

Our website offers suggestions, poems, songs, stories, prayers and links to all events

www.papworthteamchurches.org

- ✓ Sunday Service @ 10am via Zoom
- ✓ Morning Prayer @ 8.15am via Zoom (Monday-Saturday)
- ✓ Pastoral and Community Care via phone



Papworth Team Ministry
www.papworthteamchurches.org

Andrina B


the footcare specialist

Nail Cut • Callus • Athlete's Foot • Hard Skin
 Corns • Fungal Infections • Plantar Faciitis
 Orthotics • In-Growing Toe Nail • Foot Massage

To book your appointment contact Andrina on
07966 571 686 / e: andrinab@foot-care.co.uk

www.foot-care.co.uk

Andrina Baldock, Foot Health Practitioner, SAC Dip. FHPP FHPT
 Register for Foot Health Practitioners Member



CAMBOURNE OSTEOPATHS

Back Pain
 Neck Pain
 Joint Pain
 Headaches
 Muscle Spasm
 Sports Injuries
 Arthritis
 & much more



In Pain? Let us help.
 We are committed to giving an honest opinion, effective treatment and good advice.

Appointments Mon-Fri Regus, 1010 Cambourne
 01223 598558 Business Park, CB23 6DP

Book online: www.cambourneosteopaths.com
 Email: practice@cambourneosteopaths.com



ian critten
 accountancy ltd

12 Varrier Jones Drive, Papworth Everard, Cambridge, CB23 3GJ
 01480 831 422 www.critten.co.uk info@critten.co.uk

Providing quality accounting and taxation solutions to individuals and all businesses. Cloud accounting solution specialists.

Accounts - Tax returns - PAYE - VAT - R&D claims
 Xero & QuickBooks online certified professional advisors

Ash Croft Veterinary Surgery

169 St Neots Road Hardwick Cambridge CB23 7QJ Tel: 01954 210250	Unit 1, Pendrill Court Ermine Street North Papworth Everard CB23 3UY Tel: 01480 831615
---	--

Consultations by Appointment Only

A comprehensive service for domestic pets including:
 Surgery; Micro-chipping; Acupuncture & Reptile Clinic

www.ashcroftvet.co.uk



Diamond Dog Grooming

01480 880393 or 07707477516

Jocelyn.Marcroft@googlemail.com

112 High Street, Yelling, Cambs, PE19 6SD

Live Taught GCSE Programmes

Key Features:

- ▶ We're working hard to help children of **key workers** continue to enjoy a high quality education during the COVID-19 crisis.
- ▶ Starting this May, eligible children can enrol for remote classes, taught live by our expert tutors, covering the full GCSE curriculum.
- ▶ 80% Fee Waiver starting from £720 per subject
- ▶ 10 GCSEs Included
- ▶ 30 Tutor Hours per Week

Dates:
 4 May 2020

To learn more, please contact us:
admission@cambridgeseminarcollege.co.uk

Eligible Professions include:

- ✓ NHS Staff
- ✓ Social Workers
- ✓ Retail Staff
- ✓ Teaching Staff
- ✓ Public Servants

DSSelectrical

All aspects of Domestic and Commercial Electrical Work Undertaken

Freephone: 0800 019 7992
 Mobile: 07826 515 667
 Email: info@dselectrical.co.uk
 Web: www.dselectrical.co.uk

ELECSA Approved Contractor Electrical Safety Register TRUST MARK Government Endorsed Standard

City and Guilds Qualified / Part P Registered Company / Fully Insured / All work guaranteed



Gardenology
Landscape+Design

Garden Design - Paving - Driveways - Decking -
Fencing - Turfing - Artificial Grass - Planting

Free Quotations and fully insured

01223 625018 07464 323214
www.gardenology.net

JASON KIRBY

*Professional Painting
& Decorating Ltd*

*A Professional Service
from Start to Finish*

Tel: 01954 211775
www.jasonkirbyltd.co.uk






S. B. Turf
Supplied and Laid




All overgrown gardens rotovated, cleared, levelled and laid with cultivated lawn turf
Turf collection available
Grass seeding and tree service also available
Block paving and patio service

All work carried out by experienced staff with recommendations and portfolios of work available
FREE ESTIMATES - 01487 822993 or 07966 523239


Garden Fences and Decking

- Garden Fences Built
- Decking Designed and Installed
- Garden Décor including Pergolas, Arches & Gates
- Bespoke Garden Carpentry



"Very professional service, highly recommended. Friendly team. Arrived on time and left the workplace spotless. I'm really happy with the fence"

Contact Paul or Martin at Cambourne Carpentry email: home@camournecarpentry.co.uk
Tel: 07785 551224 for a free quotation



Cambourne Self Storage

24 Hour Access 7 Days a Week 365 Days a Year

24 Hour Remotely Monitored CCTV

Sensor Flood Lighting

Keypad Entry and High Security Locks

Vehicle Access Directly to Unit Doors

01767 676189
www.CambourneSelfStorage.co.uk

**IF YOU ARE READING THIS
THEN SO COULD POTENTIAL
CUSTOMERS**

Contact adverts@pendrill.net or 01480 831066

M.I. TICKNER DECORATORS

Local company. Local tradesmen.

2 Hanslope Close
Papworth Everard
Cambridge
CB23 3AN

www.miticknerdecorators.com
miticknerdecorators@gmail.com



Quality Bespoke Secure Storage



Easy to open & fast to access. High security with PIN codes, megapixel CCTV cameras & individual room alarms. Choose the size you really need. Store just about anything, for any length of stay. Clean, dry & condensation free. Friendly & helpful service. Viewings by appointment.

More Space

Located at Manor Farm, Graveley, PE19 6PH. Mention PNV11 to receive £5 discount on your first months rental.

• Home • Document • Commercial



morespacestorage.co.uk Call 01480 830130 to reserve yours today



“FROM YOUR IMAGINATION TO OUR HANDS”

Matt Seaber Shinn

07754573876

msscarpentry@hotmail.co.uk

Check out our website to be inspired and let us turn your home dreams into reality

msscarpentry.com



Local, Cost Effective Carpentry and Building Services

- Kitchen fitting
- Bathroom and Bedroom installations
- Laminate/Engineered Wood Flooring
- Built-in and Fitted Wardrobes
- Cupboards built to your specification
- Skilled Carpentry and Joinery work

“The work was performed on time and to a high standard. We are very happy with the results”

Contact Martin or Paul on

cambourne.improvements@gmail.com for a free quotation

or Tel: 07785 551224



CALL US NOW!

01480 832 489

We are your local joinery workshop and are here ready to create that something special just for you. We can produce anything you would like for home & garden.

SUPPORT YOUR LOCAL COMPANY



LOCATION!

Unit C3, Atria Court,
Papworth Business Park
Stirling Way, CB23 3GY

Why not design something yourself and we will make it! Call us, share your ideas, even email us your pictures.

Hardwood garden benches - garden planters - home office furniture
book cases - lamp tables - wardrobes

PROVIDING LOCAL JOINERY SOLUTIONS

email: info@bluecrowjoinery.com @bluecrowteam www.bluecrowjoinery.com



- SUPPLIERS & INSTALLERS OF**
- QUALITY CARPETS • SAFETY FLOORING • VINYLAYS
 - FLOOR SCREEDS / LATEXING • REPAIRS AND RE-LAYING • LINO
 - CORK TILES • CERAMIC TILING • CARPET TILES • LAMINATE FLOORING

HOME SELECTION SERVICE
For all Contract and Domestic Installations

CARPET CLEANING SERVICE
Using the Host Dry Extraction System

Tel: 01480 831886 Mobile: 07970 256237 Fax: 01480 830997
rd flooring@lineone.net www.rdbflooring.co.uk

Measuring, estimating and expert advice **WITHOUT OBLIGATION**



- Painting & Decorating
- Kitchens & Bathrooms
- Wood Floors & Tiling
- General Property Repairs

Friendly, local service at competitive rates
No Job Too Small

Why not call NOW to arrange a FREE estimate ?

Simon Downes on 07846 717572 / 01954 781205
or e-mail simon@sdpm.biz

NC AND PLUMBING HEATING

Gas, LPG, Oil servicing, installation and repairs, all plumbing works undertaken

Tel: 01223 870580
www.nutcombecambridge.co.uk




J. HALSTEAD
— PLUMBING & HEATING —

INSTALLATIONS • REPAIRS • SERVICING

Complete Bathroom Installations
General Plumbing Repairs
Pipework and Drainage for Kitchen Appliances
Radiators and Towel Rails Installed
Power Flushing

CALL JOHN FOR A **FREE QUOTE**
07570 387 684 • 01480 830 329
www.jhalsteadplumbing.co.uk



CORGI    **GAS safe REGISTER**

Jim Edwards
Gas appliances, Plumbing and Heating

Gas Boiler service from £59.
Bathrooms, Showers, Cookers, Fires, Taps.
Gas safety checks, landlord certificates,
Local Friendly service, All plumbing work undertaken
01954 267054 07870520702
jim-edwards@live.co.uk
www.cambridge-plumber.co.uk

Cambridge Heating Solutions™

Plumbing & Heating Engineers

Gas boiler & fire servicing plus safety checks
Boiler & heating system repairs
Powermax repairs & servicing
Gledhill Boilermate repairs
All plumbing work undertaken
www.cambridgeheatingsolutions.co.uk
Telephone: 01954 212495 / 07884188892
**** Free 1 year parts & labour guarantee ****



HEATING & PLUMBING RESOLUTIONS
CENTRAL HEATING SPECIALISTS



Boiler Service/Repair
Gledhill Boilermate Repair
Unvented Service/Repair
Boiler Installations
Landlord Certificates
All Aspects of Plumbing
Heating Systems
Kitchens/Bathrooms

Terry: 07956 460 932
John: 07789 435 542





office@hprcams.co.uk
www.hprcams.co.uk

CALL US TODAY ON
01480 831 464
PAPWORTH RESIDENT

Gott
Plumbing & Heating

For high quality services at affordable prices, contact Ed Gott for all your plumbing, heating and oil boiler needs.

- Oil Boiler Specialist
- Plumbing
- Central Heating
- Burst Pipes
- Leaking Taps
- Bathroom Refit
- Hot Water Cylinder
- Wet Room Installations

Reliable local plumber based in Yelling.
Email: info@gottplumbingandheating.co.uk

07805 650940
www.gottplumbingandheating.co.uk




CB23 TAXIS

07494 033 776
07400 409 010

cbtwentythree@gmail.com
www.cambourne-taxi-transfers.co.uk










CAMBOURNE VEHICLE SERVICES

The Drift, Bourn, Cambridge CB23 2TB

Tel: 01954 719039

www.cambournevehicleservices.co.uk
info@cambournevehicleservices.co.uk


- * **SERVICING FOR ALL MAKES**
- * **M.O.T's (UP TO 3.5 TONNES)**
- * **EXHAUST SYSTEMS SUPPLIED AND FITTED**
- * **TYRE SERVICE - SUPPLIED AND FITTED**
- * **COURTESY VEHICLE AVAILABLE (BY PRIOR ARRANGEMENT)**
- * **AIR CONDITIONING SERVICE**

ALL VEHICLE WORK UNDERTAKEN

FREE collection and delivery


Quality Vehicle maintenance adjusted to suit your pocket

Free collection and delivery applies to the local area only



Servicing
 MOT
 Diagnosis
 Repairs
 Air Conditioning
 Tyres

Free Collection & Delivery Service | Courtesy Cars Available*



Email: contact@agmotors.net
 Unit A5 Astra Court | Papworth Everard
 Papworth Business Park | Cambridge | CB23 3GY

01480 831807
www.agmotors.net

@AGMOTORSPPAP
 @AGMOTORS_NET

GRAVELEY GARAGE TEST CENTRE LTD

MOT WHILE U WAIT

CLASSES 1 2 3 4 5 7

Servicing to all makes of vehicle

- New bay for servicing motor bikes
- Tyres and Exhausts supplied and fitted
- Free courtesy cars
- Comfortable waiting area
- Free tea / coffee

Mon to Fri 8 to 6 - Sat 8 to 4
01480 830462 / 831058
 HIGH STREET, GRAVELEY,
 ST. NEOTS - PE19 6PL
enquiries@graveley-garage.co.uk
www.graveley-garage.co.uk

Produce this advert to get £4.00 OFF the current price of your MOT

RE-PLAY PAPWORTH

SUNDAY AFTERNOON VINYL ALBUM PLAYBACKS

With the Courtyard off-limits, we are not going to be able to run the Sunday afternoon vinyl sessions in the café for a while, so we'll continue to do them by podcast.

Get your orders in early with the Courtyard, download the podcast and spend a couple of hours relaxing on a Sunday afternoon.

Follow us at www.facebook.com/playpapworth or email playpapworth@fenton.org.uk to be notified of events.

We're open to requests for Sunday 31st May and we might even be able to do more than one podcast a month. Keep those classic vinyl album suggestions coming!

To donate to our virtual East Anglian Air Ambulance collection tin, visit www.eaaa.org.uk/





THE COURTYARD
COFFEE SHOP / MICRO PUB



PAPWORTH LIBRARY

PAPWORTH CRAFT GROUP

MEETINGS EVERY 1ST AND 3RD SATURDAYS OF THE MONTH ALL WELCOME - **No Meetings until further Notice**

(Please note that on Saturdays access to the library is by the rear entrance adjacent to the Studio.

As everyone settles down to another three weeks of lockdown, there is no shortage of ideas and suggestions as to how one can occupy oneself productively to fill the seemingly longer days. Even those who are can work from home, (and do not have children to care for and home school), are free of the time spent travelling to and from work. Apart from the scramble for food and loo paper, craft retailers are snowed under with orders. Along with bread making, the lockdown generation has turned to handcrafts in a big way. Yarn for knitting and crochet is selling so well, that it is pointless to stick rigidly to a colour that either the pattern demands, or one has set one's heart on. Whole ranges of yarn display the words 'Out of Stock' beneath each colour, and this applies to those at the more expensive end of the spectrum as well as the more modestly priced yarns. One retailer has sent at least two emails begging customers to refrain from emailing to chase up an order placed only a few days before. Many online retailers are operating with fewer members of staff, due to successive absences related to Covid-19. A needlework retailer has informed customers that orders will take some time to process due to staff absences. Yet another closed the website for three weeks, having decided that going to the post office was not a necessary journey. Although this retailer is taking orders again, packages are only mailed one day a week. Perhaps there is a lesson to take from this into our post-lockdown new normal. During the old normal, these craft retailers would turn orders around in 24 hours. There was no requirement for patience, as our orders received swift attention and typically would be received with 24-48 hours of the order being placed, (as long as the items were in stock). In addition there was always the option of paying for Next Day Delivery. No longer. These stressed people on the other end of our requests are trying their best. Yes, it is brilliant that the nation is turning to handcrafts in the current challenging situation, and retailers are, most likely, pleased with the increase in orders. In our desire for wanting everything yesterday, the expectation has been for a swift despatch of our orders. Times have changed, and they may change even more. For lockdown has given birth to reflection on many things, and perhaps the desire for 'everything now' will not be part of the new normal. People count. The staff at the online retailers are human too and are sharing the uncertainty brought about by Covid-19. Your yarn or embroidery thread may take a week to ten days to arrive after your order was placed. Frustrating as that may be in your haste to get on with your project, it is a small thing in the scheme of things. Patience is a virtue, as they say and perhaps that is just one of the things to carry through to the new normal, whenever that arrives.

Happy crafting and please join us at the Papworth Craft Group when normal service resumes!



Feeling Stitchy?

SO ARE WE.

Papworth Craft Group

Every 1st & 3rd Saturday
Papworth Library
1030-1230.



OPENING HOURS

Mon	Closed
Tues	10.00am - 1.00pm 2.00pm - 5.00pm
Wed	10.00am - 1.00pm
Thur	2.00pm - 5.00pm
Fri	Closed
Sat	10.00am - 1.00pm

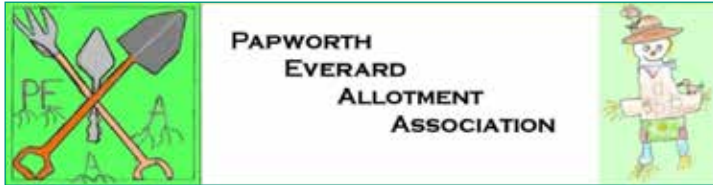
Telephone: 0345 045 5225

Web renewals:

www.cambridgeshire.gov.uk/leisure/libraries

Cambridgeshire Library Notice

- All library buildings closed on 23 March 2020 until further notice.
- All item due dates have been extended and all overdue fines suspended throughout the closure period.
- We are expanding our online offer. This includes investing more resources into our e-offer as well as planning online events.
- Please see our library news page for more information and follow Cambridgeshire Libraries on Twitter or our Facebook page for more news on this.
- The Library Presents Spring Programme 2020 has been postponed. This includes all performances and workshops planned until June 2020. For more information, please visit our Library Presents page.



After weeks of wet weather, we have now had a super dry, super-hot Easter. This was great up the allotment and saw lots of members tending their plots while all practicing social distancing and wearing gloves when touching communal items such as gates and locks.



Our first (of many) asparagus crop.

Easter is a traditional time to plant potatoes, which we did with our first earlies, we also planted some more onions sets (small plants already grown from seed) and will soon be planting beetroot and carrot seeds, probably under cover to provide a micro-climate and encourage early cropping.

We have also had our first crop of asparagus earlier this month, which when picked from the ground, taken home and cooked that evening is full of lovely flavour. These were some from our oldest plot of asparagus, we now have a couple of beds of red asparagus too, yet to taste those, so I'll let you know how they taste when I find out.



Blossom on our apple trees.

Our apple trees are looking lovely in their blossom. We have 6 trees and they are a mixture of Fiesta and Katy. All trees up the allotment have to be M27 which is a tree no more than 6 foot tall and we are not allowed more than 6 trees per plot. Fiesta and Katy pollinate each other and are very heavy cropping in fact we have to actively reduce the apples (and compost them) to not over strain the branches but we still end up with a good crop from the 6 trees.

Speaking of compost, we have had the opportunity over the last few weeks to dig out the compost heaps on our plot. It's amazing to see what lovely rich compost we get from our kitchen waste (tea bags, veg cuttings etc) and allotment prunings (sweet corn stalks, various plant trimmings etc) and despite our less than perfect compost maintenance (we normally find other things to do rather than turn the compost regularly) it ends up producing plenty of compost to break up the solid ...clay on our plot.

Nearly all our available plots are now occupied, but we have more land we can turn over to plots if required so please contact us on enquiries@peaa.uk if you would like a plot, alternatively pop up the site and have a chat (at an appropriate distance) with any of our members.

Regards - M&P

From the Past - Photographs from Papworth Residents



Fairies over Forties

Womens Institute

Approx. 1956 - 1957

Front Row:

Claire Morton, Lynda Morton,
Jane Ferry, John Baxter,
Christine Long and
Vanessa Baxter

Back Row:

Lilian Morton, Peggy Ferry,
Unknown, Unknown

Picture supplied by Lynda Morton

On Your Door Step - Photographs from Papworth Residents



Elsa Brown Age 10



Elsa Brown Age 10



Elsa Brown Age 10



Paula Hutchinson

On Your Door Step - Photographs from Papworth Residents



Jane Brown



David Potter