

# News & Views



THE COMMUNITY NEWSLETTER FOR PAPWORTH EVERARD



**31st March**

**MARCH 2024**

**1750 COPIES DISTRIBUTED MONTHLY**

**ISSUE No. 03-24**





## USEFUL CONTACTS

### NEWS & VIEWS

Janet/Peter Dobson  
janetpendrill@gmail.com

**POLICE COMMUNITY - SUPPORT OFFICER**  
Emergency - 999 - Non Emergency - 101

**COMMUNITY FIRE SAFETY OFFICER**  
01954 714030 - Mondays Only  
Emergency 999

**SOUTH CAMBRIDGESHIRE DISTRICT COUNCIL**  
03450 450500 - 01954 713000

**PARISH CLERK - VILLAGE HALL**  
01480 830360  
clerk@papwortheverardpc.org.uk

**DOCTORS SURGERY**  
01480 830888

**THE TEAM RECTOR**  
01480 839933 or 07710661003

**HILTON METHODIST CHURCH**  
Minister Rev. Sue Baker-Maher  
Telephone 01480 473444

**PENDRAGON PRIMARY SCHOOL**  
01480 830267

**PENDRAGON PRE-SCHOOL**  
01480 830267 - Option 4

**PAPWORTH TRUST DISABILITY CHARITY**  
01480 357200

**PAPWORTH TRUST HOUSING MAINTENANCE**  
0330 678 0008

**PAPWORTH FC - BRYAN JOHNSON**  
01480 830768

**BLASTERS - COLTS FOOTBALL**  
Alison - 07907 995924  
mail@papworthblasters.com

**TENNIS**  
papworthtennis@hotmail.co.

**BOWLS**  
Dave Richardson - 01480 830867

**CAMBS TAI CHI CLUB**  
www.cambs-taichi.org.uk  
07415 267908

**THE VARRIER JONES FOUNDATION**  
01480 831801

**THE ASTRONOMY CLUB**  
01480 830729  
peter@cheere.myzen.co.uk

**ALLOTMENT ASSOCIATION**  
enquiries.peaa@gmail.com

**PAPWORTH LIBRARY**  
0345 045 5225

**PAPWORTH EVERARD WOMEN'S INSTITUTE**  
Pat Martin - 01480 350355  
e-mail pat@woodpecker6.co.uk

**VARRIER JONES SOCIAL CLUB**  
Audry Reid - 01480 831053

**PAPWORTH COMMUNITY GROUP**  
www.papworthcommunity.co.uk  
papworthcommunityweb@gmail.com  
07469 876467

**PAPWORTH CO-OP**  
01480 831569

## News & Views Rate Card

Valid from November 2023

ROP Rates (Adverts on Editorial Pages)					
Advet Type and Size		1 x Insert	3 x Inserts	6 x Inserts	12 x Inserts
Quarter Page	95mm x 132mm	£60.00	£173.00	£333.00	£612.00
	194mm x 64mm				
Half Page	95mm x 265mm	£110.00	£317.00	£611.00	£1,122.00
	194mm x 132mm				
Full Page	194mm x 256mm	£200.00	£576.00	£1,110.00	£2,040.00

Classified Rates					
Advet Type and Size		1 x Insert	3 x Inserts	6 x Inserts	12 x Inserts
Sixteenth	95mm x 30mm	£15.00	£40.00	£75.00	£145.00
Eighth Page	95mm x 64mm	£25.00	£72.00	£139.00	£255.00
Quarter Page	95mm x 132mm	£50.00	£144.00	£278.00	£510.00
	194mm x 64mm				
Half Page	95mm x 265mm	£95.00	£274.00	£528.00	£969.00
	194mm x 132mm				
Full Page	194mm x 256mm	£190.00	£548.00	£1,055.00	£1,938.00


## BIN COLLECTION DATES

Bin Dates	Black Bin	Blue Bin	Green Bin
Fri 8 Mar 2024	✓		
Fri 15 Mar 2024		✓	✓
Fri 22 Mar 2024	✓		
<b>Mon 25 Mar 2024</b>		✓	✓
Fri 5 Apr 2024	✓		

Please Note: dates highlighted in red denote different collection day

## CONTACT DETAILS NEWS & VIEWS

www.newsandviewspapworth.co.uk - janetpendrill@gmail.com

 News & Views - Papworth Everard

Deadline for next edition is Wed 27th March

Front Cover - Yellowhammer - Photo taken by the Editors

# Papworth Library

Papworth Library is full of books for every interest. Whether you're a lifelong lover of literature or are just getting started in rediscovering reading, the library is a great place to try out something new this Spring. Joining the library is simple and free, you can do it in person or online at [www.cambridgeshire.gov.uk/libraries](http://www.cambridgeshire.gov.uk/libraries). Borrow books from our shelves or download from our eLibrary, use our computers, printer, scanner, or explore our online tools for work or research – including free access to online magazines and genealogy websites. We can even help you with bus pass applications and ferrule replacement. To find out about any of our services, ask your local librarian, search 'Libraries - Cambridgeshire County Council' online, or call the Cambridgeshire Libraries service on 0345 045 5225.

## Here are some of our upcoming events:

### Tues 5th March 3:30-4:45pm – Lego Club

Do you love Lego? Got a passion for building? Then we have the club for you! Come along and build Lego creations with your friends after school. Drop-in session. 4+, children must be accompanied by an adult.

### Thurs 14th March 10-11:30am – Engage: 'Bats - Past and Present'

Animal history researcher and library assistant Eric Halinski will be giving a talk about the evolution and history of bats. Learn what they eat, how they live, and how they went from flying mice to Halloween icons, as well as which bats we can see at night here in Cambridgeshire. Stay afterwards for a chat over a cuppa with other local residents. Donations welcome.

Sat 30th March 10:15am-12:15pm – Wood Green's 'Caturday'  
Join us for a fun packed 'Caturday' morning at the library. There will be lots of cat themed activities to take part in, and an expert from Woodgreen Pets Charity will be on hand to answer those all-important questions about your furry friend. Why not come and test their knowledge! Drop-in session. Donations welcome.

Every Tuesday 10-11am (term-time only) - Stay and Play  
Parent-led play session with a selection of toys and games. A chance for your little ones to play with others and for you to meet other parents in a safe, welcoming environment. Free drop-in sessions, children must be supervised by an adult, donations welcome.

Every Wednesday 10-10:30am (term-time only) - Rhymetime  
Half an hour of songs, rhymes, and movements for 0-4s! Free drop-in sessions, children must be supervised by an adult, donations welcome.

## A reminder of our opening hours:

Monday – Closed

Tuesday – 10am-1pm and 2pm – 5pm

Wednesday – 10am-1pm

Thursday – 2pm-5pm

Friday – Closed

Saturday – 10am-1pm

We can't wait to see you this March!

Best wishes from Charlotte and the whole  
Cambridgeshire Libraries team.



**You are not alone. Sands supports people affected by the death of a baby before, during, or shortly after birth.**

**If you need support:**

-  Call the Freephone Helpline: **0808 164 3332**
-  Email: [helpline@sands.org.uk](mailto:helpline@sands.org.uk)
-  Visit the Online Community: [www.sands.community](http://www.sands.community)
-  Visit the website: [sands.org.uk/support](http://sands.org.uk/support)
-  Download the **Sands Bereavement Support App**

**Cambridgeshire Sands** is a local group running friendly and relaxed meetings, providing bereaved parents, family, and friends with an opportunity to meet others who have been through a similar experience. Memorial and other events also run during the year locally and nationally.

**Our support meetings are held:**  
**Where:** Holiday Inn Express Back Lane, Great Cambourne, Cambourne, Cambridge CB23 6LJ  
**When:** Third Thursday of the month

**Contact Cambridgeshire Sands to find out more:**  
**e:** [support.cambridgeshire@sands.org.uk](mailto:support.cambridgeshire@sands.org.uk)  
**w:** [www.cambridgeshire.sands.org.uk](http://www.cambridgeshire.sands.org.uk)  
**i:** CambridgeshireSANDS





## Wanderlust Dream Travels







## 10 Good Reasons

**You're relaxed before you even leave!**  
For all flights, hotels, cruises, events and activities.

★ I do all the hard work	I do all this for free ★
★ I save you time and money	I'm just a phone call away ★
★ I get the best deals in the industry	I'm a real person not a website ★
★ I make your dream holiday a reality	I'm there for you beyond the sale ★
★ I add value with extras and bonuses	ABTA and ATOL protected ★

**Don't keep me a secret! Please share me with your friends and family**

Willem Wilken is an independent travel advisor under IntelioTravel UK, ABTA membership P7284. IntelioTravel UK are appointed agents of our ATOL-protected suppliers.

Mobile: 079 3941 6805 Willem  
 Email: [wanderlusttravels.dream@gmail.com](mailto:wanderlusttravels.dream@gmail.com) Website: [willemwilken.inteliotravel.uk](http://willemwilken.inteliotravel.uk)



Registered Charity No: 1044680

## Update March 2024

### Customer Standards

We are pleased to share with you our finalised customer service standards which give much greater clarity on what customers can expect when interacting with Papworth Trust. We start with our organisation-wide ‘customer charter’ which shows that as a customer you have the right to...

communicate with us in a way that works for you  
be treated with fairness and respect  
be listened to  
a quality service.

Each of our Papworth Trust services – Housing, Employment, Care and Day Opportunities – has a set of customer service standards which sit beneath the Charter. These will tell you what to expect when joining our Papworth Trust service, how to contact us, how we will support you, and how you can take part and get more involved at the Trust.

Each of our customer standards are also available in easy read.  
Una Davis, Deputy Director of Operations, said:

“We are proud to roll out our customer services across all of our operational areas. Not only do they let customers know what to expect from us, but they also show the ways in which customers can hold us to account and check we are doing what we said we would.”

Ian Cunningham, Business Manager for Housing Management, said:

“I’m really pleased to be able to unveil our customer standards for housing. Over the last year we’ve working collaboratively with tenants to create these, including delivering a session with the tenant scrutiny panel to help us to understand what was important to tenants.

Directly influenced by tenant feedback, we’ve made a commitment to contact tenants via telephone or their preferred method of communication following any out-of-hours emergency visit. This ensures we check on the tenant’s well-being, confirm resolution of the issue, or provide updates on the next steps.”

### Time for Tenants

There will be a face to face “Time for Tenants” session taking place on Wednesday 27 March 2024, between 5pm and 7pm. The host for this session will be Mark Blake, Director of Finance, IT and Company Secretary.

You do not need to book to attend, just drop in anytime between 5pm and 7pm at Bradbury Court, Westfields, Papworth Everard, CB23 3FA.

### Employment Support

A new Work and Health Programme called Pioneer is now being delivered in Cambridgeshire by the Papworth Trust. This exciting new programme is designed to support economically inactive people into work using a method called place and train.

If you would like to discuss our support then please get in contact with:

Scott Twinn - Email [Scott.twinn@papworthtrust.org.uk](mailto:Scott.twinn@papworthtrust.org.uk)  
Telephone 07707 290969



## Friends of Pendragon Primary School

It’s been a busy month at Friends as we’ve been working hard to plan our upcoming events (and of course spend some of the money we’ve been raising). Purchasing resources for OPAL (the school’s outdoor play and learning scheme) has been the focus of our recent fundraising efforts, and we’ve recently purchased some interlocking scooters, walkie talkies and an outdoor speaker to help support this. In addition, we’re now awaiting delivery and construction of the new outdoor learning summerhouses that were purchased recently, and we’re very excited to soon be funding some new hanging bars for the school playground.

Events-wise, we know that the pupils are very excited about the upcoming Spring-Fling disco, and the Easter Egg Hunt that will be taking place at the end of the Spring term. In addition, we have two upcoming events to which we would like to invite the wider community. The first is an Easter pop-up shop that will be taking place after school on Thursday 28th March. We will either be on the main playground or in the main hall (weather dependent) from 3:15 until approx. 3:30 and there will be a variety of Easter-themed treats on sale, including cakes and Easter sweetie cones. Our pop-up shops usually sell-out fast so don’t be late if you want to grab yourself some Easter delights.

The second upcoming event is the Pendragon Big Build, which will be taking place in the main hall on Friday 19th April, from 3:15 until 5:00 pm. At this family event, kids and grown-ups alike will have the opportunity to do some junk modelling or play with a variety of construction themed toys (from marble runs to Lego). Entry will be free (although donations are always welcome), and there will be a café selling hot drinks and cake on the day. Everyone is welcome and we’d love to see the whole community there (particularly it’s younger members), so come and join us if you fancy some construction, craft and cake.

If you’d like to know more about Friends or have any questions for us, feel free to get in touch at [Friends@pendragon.cambs.sch.uk](mailto:Friends@pendragon.cambs.sch.uk). We’re always on the look out for new committee members and extra volunteers (you don’t need to have a child at the school), so if you have any time to give and you’d like to help us support the school then let us know.



@papworthtrust



@papworth\_trust

Friends of Pendragon

# BIG BUILD

Construction, Craft and Cake

Friday | 19 April 2024

3:15 – 5:00 pm – In the Main Hall

FREE ENTRY  
(donations welcome)

### Construction Free-Play

Lego, marble runs, wooden blocks and more.



### Junk Modelling

Help build a giant fort or make a smaller model to take home.

### Refreshments

Cafe selling hot drinks and cake.



Everybody welcome



# PAPWORTH EVERARD PARISH COUNCIL REPORT

Parish Clerk: Sarah Cruse  
Telephone: (01480) 830360  
E-mail: [clerk@papwortheverardpc.org.uk](mailto:clerk@papwortheverardpc.org.uk)

## COULD YOU BE A PARISH COUNCILLOR ?

The Parish Council currently has 11 Councillors but still has vacancies for 2 more to bring us up to the full complement of 13.

It doesn't matter if you're new to the village or have lived here your whole life - if you have a real interest in the village and want to get more involved why not call for a chat and see if it's for you?

We're looking for people who can rise to the challenge and make a commitment to improving the quality of life for everybody in our village, no matter what your age or experience.

Knowledge and previous experience aren't essential, training is available and existing members have a wealth of experience they are willing to share. The essential element is enthusiasm and a willingness to work as a member of our team to make a difference to our village.

We hold 11 Parish Council meetings per year which also incorporate Planning matters. In addition we would like you to become a member of one or more of our working groups (Amenities and Playing Fields, Village Hall) and you will also be able to get involved in looking at specific projects if you wish.

There is more information about what the Parish Council does and eligibility criteria for becoming a Councillor on the PC's website [www.papwortheverardpc.org.uk](http://www.papwortheverardpc.org.uk)

If you think you have what it takes to make a difference, have any questions, or would like an informal discussion with the Clerk or an existing Councillor about what the role entails, we would love to hear from you !

Please email the Clerk, Sarah Cruse for further information [clerk@papwortheverardpc.org.uk](mailto:clerk@papwortheverardpc.org.uk)

## MULTI USE GAMES AREA

The Parish Council has agreed to refurbish the Multi Use Games area (MUGA) as the surface is beginning to crack and has sunk in areas.

The work will include replacing fencing and entrance gates, digging out and filling of the uneven and sunken areas and full resurfacing and repainting of the whole area. New combined basketball and

football goal units will be installed along with a replacement set of volleyball posts and nets.

The work will take place in the spring, although no date has been confirmed as yet. Although the work should only take approximately a week to 10 days to be completed, the MUGA will be unavailable for use for approximately 5 weeks to allow for the surfacing to fully cure before it can be painted and used.

We will keep you updated once a date for the work to commence has been agreed.

## PLAY AREA

Initial works to enable to refurbishment of the play area and paddling pool will be undertaken soon.

Work to upgrade the pool pumping mechanism means that the current pump house will have to be extended to accommodate the new equipment. This should be completed in early March.

Dates can then be scheduled for the work to commence on the pool and equipment upgrade and for the installation of the new play equipment and trail. Again, once the dates have been confirmed these will be communicated.

## PAPWORTH CRICKET CLUB

Following a successful season for Papworth Cricket Club in 2023, we look forward to starting up again this year for hopefully another great summer season!

Practice sessions will start in March / April (normally on a Wednesday evening) after the clocks change and the evenings are lighter, with league matches commencing in May.

The club would welcome any new cricket enthusiast to join the team.

If you wish to join the club, or be involved in helping out, or want to know more information, please contact: Paulson Xavier 07729 276366 or Alan Carter 07983 617703



## A428 BLACK CAT TO CAXTON GIBBET - PUBLIC INFORMATION EVENTS

Before construction starts for the much-anticipated A428 Black Cat to Caxton Gibbet improvements, National Highways are hosting a series of public information events.

**Drop in Events** - The public information events are an opportunity for you to find out a bit more about what is happening - from where and when the work starts to the fascinating archaeological discoveries made !

The mobile visitor centre is currently scheduled to be at the following locations shown in the table on the right:

More events will be planned as construction moves forward – including visits to villages and communities along the route.

More details about the whole project can be found on the National Highways website

A428 Black Cat to Caxton Gibbet improvements - National Highways

Where	Location	Date	Time
Tesco Extra	Barford Rd, St Neots, PE19 2SA	Wednesday 20 March	10am – 2pm
Morrisons	Broad St, Cambourne CB23 6EY	Wednesday 27 March	10am – 2pm
Roxton Garden Centre	Bedford Rd, Roxton, Bedford MK44 3DY	Wednesday 3 April	10am – 2pm
Tesco Extra	Barford Rd, St Neots, PE19 2SA	Wednesday 17 April	3pm - 7pm
Morrisons	Broad St, Cambourne CB23 6EY	Wednesday 24 April	10am - 2pm
Roxton Garden Centre	Bedford Rd, Roxton, Bedford MK44 3DY	Wednesday 1 May	10am - 2pm
Tesco Extra	Barford Rd, St Neots, PE19 2SA	Wednesday 15 May	10am - 2pm
Morrisons	Broad St, Cambourne CB23 6EY	Wednesday 22 May	3pm - 7pm
Roxton Garden Centre	Bedford Rd, Roxton, Bedford MK44 3DY	Wednesday 5 June	10am - 2pm
Tesco Extra	Barford Rd, St Neots, PE19 2SA	Wednesday 19 June	10am - 2pm
Morrisons	Broad St, Cambourne CB23 6EY	Wednesday 26 June	10am - 2pm
Roxton Garden Centre	Bedford Rd, Roxton, Bedford MK44 3DY	Wednesday 3 July	10am - 2pm
Tesco Extra	Barford Rd, St Neots, PE19 2SA	Wednesday 17 July	10am - 2pm
Morrisons	Broad St, Cambourne CB23 6EY	Wednesday 24 July	10am - 2pm

# Church Notices

## St Peter's Church – March Services

Sunday 10th - 10.30am - Holy Communion

Sunday 17th - 10.30am – Family Service

Sunday 24th - 10.30am – Holy Communion

Good Friday 29th – 12 noon

Reflections on the cross with Coffee and Hot Cross Buns

Sunday 31st - Easter Holy Communion

Compline 8.30pm Fridays in Lent at Boxworth (1st 8th 15th 22nd )

Maundy Thursday – 28th March Holy Communion at Caxton

The website [papworthteamchurches.org](http://papworthteamchurches.org) has up to date service information for St Peter's Church and other churches in the team.

It also has the Zoom link for Morning Prayer and information about the telephone service on Mondays

## Roman Catholic Mass

(Latin Rite)

Mass is celebrated at

### St Michael's, Huntingdon

on Saturday at 6.00 pm and

on Sunday at 9.00 and 11.00

with a Polish Mass at 3.30 pm

For more information please go to

[www.stmichaelrc.org](http://www.stmichaelrc.org)



## A time to show love

Unusually what we call Valentine's Day was, this year, Ash Wednesday, the start of Lent. The Christians' Bible reminds us of the 40 days Jesus spent in a wilderness; when he found himself strangely but tempted powerfully by an alien spiritual force. The vulnerability was no doubt in part the result of this being a time of extended fasting, and because he was alone in a hostile environment. Very few of us could have come out of

such a time unscathed. For most of us, extended periods being alone have a negative impact. On the other hand, not all social interaction is helpful!

We have been re-watching 'Downton Abbey' recently. One scene stood out for me – where in the ongoing saga of sibling rivalry between Lady Mary and Lady Edith, the latter sums up Mary's destructive behaviour towards with an uncomfortable ring of truth; that Mary's negativity was down to her own unhappiness.

In my view, one of the more disturbing features of our technologically driven world is the way social media platforms seem to be listening in on what I am thinking about, planning to do or have just agreed to put in my diary! Maybe my outlook is downbeat after all the winter rain we have had but ... too little of this connectivity is aimed at my well-being. Instead, it seems to be more focussed on trying to persuade me to buy something else, sign up for something that is probably superfluous to my needs, or feed an appetite that is more about improving the sponsor's profit margin than enhancing my life! By and large the art of "networking" seems to be much the same (or am I being grumpy unreasonably?)!

What is not in doubt is how human beings are designed to be socially engaged. We seem to live better when we are involved and interdependent with others in a mutually responsible and caring way. I am thinking of the small group I often see at a local bus stop usually twice a week; with a depth of friendship and desire to talk with one another more important (probably) than the errands they are set on as they head into a local town. Having found myself doing a larger than normal number of funerals since the start of 2024, I am very aware of those suddenly bereaved – often struggling to come to terms being on their own when the death of a spouse ended 15, 25 or sometimes 65 years as life-partners and soulmates. There is an equivalent depth of loss when one partner

in a relationship becomes afflicted with the onset of dementia or similar neurological frailties. I have a suggestion.

As the budding and flowering of early spring flowers is bringing renewed colour to the landscape, let's brighten the outlook for someone nearby to us. With a little bit of effort, we can lift the darkness of someone who may be very lonely, isolated or feeling unhappy but unable to break the cycle of their circumstances. It may be a telephone call or knock on the door in the first instance – something that indicates they are being thought of and valued for who they are and not just for being a "useful contact". Doing something like this also is a powerful statement about how we think of ourselves!

**Nigel di Castiglione - Team Rector**

## Hilton Methodist Church



Is it just me or is the world as we know it changing and not for the better?

As a Minister I am very wary of being thought a prophet of doom and gloom, but recently a non-Christian friend made a telling comment – 'Look at it another way' she said, 'What can we point to that's improving?' I am not alone in harbouring anxiety as our world becomes irreversibly more fragile and ever more a dangerous place for many. That it is still possible for most of us to live pretending this is not the case, is little comfort.

As a Minister you might expect this to be a call to return to church. Here too I am cautious. Few have ever been in the first place or have much idea of what Christianity is about. Whilst Hilton Methodist Church is both friendly and hospitable, our rituals and traditions are unlikely to mean much if you have no faith background.

If that's you, you might be interested in the resources available on the national Methodist Church website. Particularly now as we look towards the most important date in our year – Easter, celebrating Christ's resurrection. Christ, who lived in equally if not more turbulent times, who called out the injustices of his day so much so he was crucified only to overcome the barrier of death by rising again and who remains ever present.



This is the core of our faith. God unbowed by time, place, culture, ritual or tradition. God goes where God goes – ours is to see and join in. Nationally Methodists offer a rich mine of diverse resources about faith and spirituality. Take a look here - <https://www.methodist.org.uk/our-faith/worship/leat-andeaster/unbounded-love/>

Or if you are really brave, get in touch and consider crossing our threshold. Fresh eyes are a real help to our seeing and removing barriers – ever more important in these so very difficult times.

*Sue*

You can contact Revd. Sue by email: [sue.bakermaher@methodist.org.uk](mailto:sue.bakermaher@methodist.org.uk) or by phone: 07483 153948

### Services in March

3 March	10:00am	Rev. Sue Baker-Maher
10 March	11:15am	United Service at the Methodist Church
17 March	10:00am	Dr. Barbara Spencer
24 March	10:00am	Rev. Sue Baker-Maher
31 March	10:00am	Easter Day Service led by Dr. Roland Randall





## Tree Warden Report

David Potter

treewarden@papwortheverardpc.org.uk

### March 2024

Now we are into Spring, the village is blessed with blossom on many of our trees and hedgerows. Sadly, there will be less blossom on some village streets since the Papworth

Trust cut down several beautiful trees at the end of last year.

Blossoms are the flowers of fruit trees, and some other plants with a similar appearance, that flower profusely for a period in spring. Blossoms provide pollen to pollinators such as bees, and initiate cross-pollination necessary for the trees to reproduce fruit.

In herbalism, the crab apple blossom was used as treatment for boils, abscesses, splinters, wounds, coughs, colds and a host of other ailments. Many dishes made with apples and apple blossom are of medieval origin. In the spring, monks and physicians would gather the blossoms and preserve them in vinegar for drawing poultices and bee stings and other insect bites.

Why not take a walk around the village and enjoy the spectacular displays of blossom. Check out the different colours and shades. Getting to know which colours are associated with which fruit tree can help with their identification. Look out for the white blossom

of hawthorn and blackthorn in the hedgerows. Spot the distinctive colour of the early almond blossom or the beautiful pale pink of cherry blossom.

Large branches of almond blossom against a blue sky were one of Van Gogh's favourite subjects. Almond trees flower early in the spring making them a symbol of new life. Van Gogh painted a picture of almond blossom as a gift for his brother Theo and sister-in-law Jo, who had just had a baby son and named him Vincent Willem. Theo wrote: 'As we told you, we'll name him after you, and I'm making the wish that he may be as determined and as courageous as you.' Vincent Willem went on to found the Van Gogh Museum in Amsterdam which opened in June 1973.

My Tree Warden alphabet has reached the letter 'u', and it will be u for understory. In forestry and ecology, understory (or undergrowth) includes plant life growing beneath the forest canopy without penetrating it to any great extent, but above the forest floor. It is typically a sheltered layer of saplings, shrubs, brambles and vines that is warm and damp. Ideal conditions for the establishment and growth of young trees but also ideal cover for the many mammals, reptiles, insects and birds that live in the forest. Where the understory is not too dense, it also provides protection for wildflowers and fungi.

Besides the variety of wildlife supported by a healthy woodland understory it also provides a necessary restriction on too much public access and disturbance to the delicate ecosystem of the woods.

This month of March ends with Easter Day on the 31st. Green shoots and spring flowers in our gardens, hedgerows and woodland. New beginnings to explore and enjoy. Happy Easter.

*'Loveliest of trees, the cherry now  
Is hung with bloom along the bough,  
And stands about the woodland ride  
Wearing white for Eastertide.'*

From 'A Shropshire Lad' by A.E. Housman



## Hilton Coffee Mornings

Coffee mornings in aid of EACH  
(East Anglia's Children's Hospices)



are held in  
the Hilton  
Methodist  
Schoolroom



on the first Saturday of each month.



2 March 10:00am to 12 noon

6 April 10:00am to 12 noon

Hope you will be able to join us!





## Anyone for Charades?

On Tuesday 20th of February after a delicious meal of sausages, mashed potato, broccoli and gravy, with ginger cake and custard to follow, we had a game of charades which is always good fun. Following charades Carol hosted a

quiz. The quiz book questions were relatively easy which was a change from some of the other quiz books in the cupboard.

The aim of the Day Centre is to provide a social event and a meal for elderly, isolated or lonely clients each week on Tuesdays. There are no minimum age or ability requirements. New clients and volunteers are always welcome.

On Tuesday 13th of February we celebrated Shrove Tuesday by having some crepes which came from



France. On the same day Stuart entertained us again playing his synthesiser and singing. If you are internet connected you can see a clip on our Facebook page of Carol's lively dancing to the tune Popcorn.

Other highlights of February included a visit from Elvis singing some of his greatest hits. On the same day we also had some very tasty fish and chips from Luke's here in Papworth.

In late January we had a welcome visit from David and Ann Potter with bible readings and hymns.

If you are interested in joining the Day Centre or finding out more, either on your own behalf, or on behalf of a loved one, please phone Jenny on 01480 492697. You can refer yourself and we also still welcome referrals from G.P.s and other Health and Social Care Professionals, and other sources.

The details of how the Day Centre runs are below:

The cost is £13 per day including morning tea and coffee and a tasty two course meal, afternoon tea and cake, and often outside entertainment. We meet every Tuesday between 10am and 3pm in The Community Centre, number 5, The Close, Papworth Everard. The Centre is fully wheelchair accessible. Transport is available.

Find us on Facebook: search 'Papworth and District Day Centre'.

If you would like to find out more about the Day Centre, why not call the following? We would love to hear from you.

Contact: Jenny on (01480) 492697 for further details, if there is no answer please leave a message or your name and number, and I will call back.



## Papworth Surgery

We continue to be extremely busy at Papworth Surgery, but we are delighted to advise that, in addition to the new GP starting mid-March that we mentioned last month, we have also taken on another Phlebotomist who will be working on a Tuesday, Wednesday, Thursday and Friday. This should make it a lot easier to book a blood test. Jane will be starting on 5th March and we look forward to welcoming her to the team.

We are now offering face to face late night appointments again on a Monday evening at our own surgery. These can be booked in advance by phoning reception. The clinic runs from 18:30 – 20:00.

We can also now book telephone GP and Advanced Nurse Practitioner appointments on a Friday evening and all day Saturday, via an external clinical team, for those unable to have appointments during the normal working hours. Again please speak to reception about booking one of these appointments.

Finally, we have said goodbye to one of our Registrars, Dr Agnew. She will now be continuing her training at another local surgery. To replace her we have a new Registrar, Dr Patwary who will be working with us on a Tuesday.

## Rant from a local Resident

As residents and a dog owner we walk the village on a regular basis and have become more and more frustrated by some of our fellow dog walkers and how they deal with their dogs waste. Most do the right thing and bag up and put it in a bin but others just make me ask WHY. Attached are photos showing what I mean.

One is of an over flowing bin with bags of mess and other rubbish piled up next to it. Yes the council should be emptying the bins but it cant be right to just keep adding more and more making the problem worse. Surely its better to take your waste home and inform the council of the full bin. Other photos which show perhaps the worst and that is the random dumping of bags in hedge's and walk ways, we don't want dogs mess left for people and children to walk in but do we want yet more plastic littering our streets, parks and woodland.

Sorry if this is a bit of a rant but I just don't understand why people cant take their mess home and dispose of it responsibly.





# Papworth Craft Group

MEETINGS EVERY FIRST AND THIRD SATURDAYS  
OF THE MONTH

10:30 - 12:30 AT PAPWORTH LIBRARY

*Please note that access to the library on Saturdays is at the back adjacent to the Studio*

By the time this edition of the News & Views is published, meteorological spring will have arrived and everyone will be looking towards the Easter break from schools, colleges and universities. Although Easter falls very early this year, it still doesn't feel quite time to be thinking of bunnies and chocolate eggs! Everyone in the Papworth Craft Group is busy on individual projects, mostly with either crochet or knitting, but occasionally someone will bring along some cross stitch. No doubt over the course of March, knitting needles and crochet hooks will be working with lighter yarns, of cotton and mixed fibres, to fashion spring and summer garments, lighter throws and bay blankets. For anyone looking for some inspiration, there are endless possibilities to view online, especially on Instagram and Pinterest, as well as the websites of all the leading craft magazines. For those who do not have easy access to the Internet, purchasing a current edition of The Knitter, Simply Knitting, Inside Crochet or Crochet Now, to name but a few craft-themed publications. The library has a good selection of craft books, many of them reasonably new. If you visit St Ives on a semi-regular basis, the choice of craft books at the library there is significantly larger. One of the special aspects of belonging to a craft group is the exchange of ideas and especially the inspiration to receive and occasionally, unwittingly, to give to one another.

Some news about our ongoing charity project. Another batch of hats, scarves and hand warmers have been delivered to a Dominic, a representative of the charity Hope & Aid Direct. Dominic has sent his sincere thanks on behalf of the charity for the numerous donations that have been made by the Papworth Craft Group. There is an ongoing need for warm clothing and blankets. With the warmer weather still a few months away, there is plenty of time for making lighter knitted and crocheted hats, baby blankets and throws. If you would like to contribute to this project, please bring anything you make to any session of the craft group at Papworth library, or our librarian, Charlotte, will be happy to accept them on our behalf at any other time. Our yarn stash is still reasonably healthy. If you would like to make items for this project, but you need some yarn, please contact Rosalind Parnell at [parnellrh@aol.com](mailto:parnellrh@aol.com).

A HUGE THANK YOU to Andrea Rowland, Carole Watt, Tina Carter and Linda Moss for the gorgeous hats, scarves, hand warmers and squares.

After a Herculean effort by Sonja Allerton over the past four years of joining squares together for blankets and finishing them off with crocheted borders, a temporary spell of ill health means that she is taking a break. Sonja has assembled and finished over 35 blankets. They have been keeping people warm in Ukraine, refugees in Europe and in this country. DO YOU THINK YOU THE TIME & INCLINATION TO ASSEMBLE SQUARES INTO BLANKETS? There are plenty of squares available! Please contact Rosalind Parnell if you would like to help.

Calling all cat lovers!! There have been record arrivals of cats at animal shelters over the past two years. There is currently a project asking knitters to make mice for the cats. If this appeals to you, there is a knitted mouse video tutorial. These mice are suitable for novice and experienced knitters alike. See the tutorial at [www.YouTube.com/watch?v=tBrscZ0OOGYs](http://www.YouTube.com/watch?v=tBrscZ0OOGYs)

NEW MEMBERS are always welcome. Membership is free and open to all, irrespective of age or gender! Our youngest member to date is nine years old. Come to the library on Papworth Everard on either the first or third Saturday of every month if you fancy two hours of uninterrupted crafting. Perhaps you have not knitted or

crocheted for a long time and would like a refresher to regain your confidence? Maybe you would like to learn but you do not have the materials? If so, please contact Rosalind Parnell and yarn and knitting needles or crochet hooks will be waiting for you at the library.

It is always worth reminding readers of the good fortune of having a library in the village. Footfall is the best way of demonstrating that the library is well used. Combine a session of the Papworth Craft Group with returning your library books and choosing some new ones. Check out other events that are hosted by the library. You may be surprised!

Have a great month and Happy Easter  
Stay well, stay safe and be kind



The poster features the HCCN logo at the top, with the text 'HCCN Health Community Cancer Network'. Below this, the title 'EASTER KNIT-A-CHICK' is written in large, bold, blue letters. Underneath the title, it says 'CALLING ALL KNITTERS!' in red. Further down, it reads 'HCCN ARE LOOKING FOR DONATIONS OF CREME EGGS AND HELPFUL KNITTERS TO KNIT EASTER CHICKS TO COVER THEM.' in red. A QR code is centered on the page with the text 'CAN YOU HELP?' above it. Below the QR code, it says 'SCAN THE QR CODE FOR MORE OR VISIT: WWW.HCCNTHECHARITY.ORG'. The bottom of the poster is decorated with illustrations of yellow chicks and colorful Easter eggs.

## Varrier Jones Social Club

Members of the Varrier Jones Social Club met for an enjoyable meeting on Friday 2nd February. February is always a month for our own 'in house' entertainment, at a time when members might still be away following Christmas and New Year, and the weather is unpredictable.

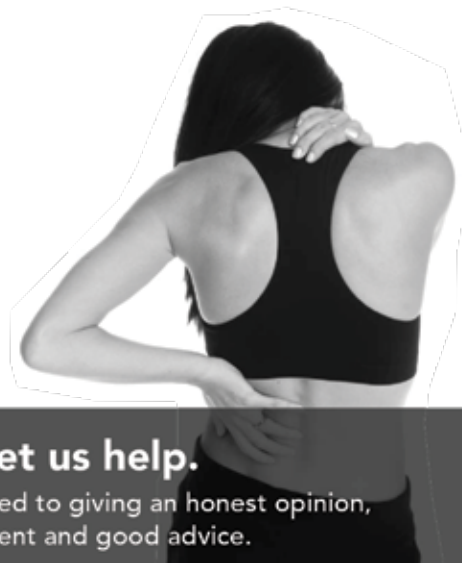
We had a 'fun' afternoon with our Treasurer Eddie calling Bingo. This is an opportunity for members to win small cash prizes and there is always a lot of friendly 'banter' between the members and the caller! But at the end of the game, Margaret Houldridge gave a genuine Vote of Thanks to Eddie on behalf of all the members, and as usual the afternoon closed with tea and lovely cake provided by the ladies of the committee.

Next meeting, to be held in The Studio, Pendrill Court, will be attended by guest singer Stuart Clements. Starting at 1 pm for 1.30 pm on Friday 1st March. New members and visitors welcome. Ring Eddie Tomkinson 01480 839230 for further information.



# CAMBOURNE OSTEOPATHS

Back Pain  
Neck Pain  
Joint Pain  
Headaches  
Muscle Spasm  
Sports Injuries  
Arthritis  
& much more



## In Pain? Let us help.

We are committed to giving an honest opinion, effective treatment and good advice.

Appointments Mon-Fri      Regus, 1010 Cambourne  
01223 598558                  Business Park, CB23 6DP

Book online: [www.cambourneosteopaths.com](http://www.cambourneosteopaths.com)  
Email: [practice@cambourneosteopaths.com](mailto:practice@cambourneosteopaths.com)



## Nebula Physio and Wellbeing Ltd

### INJURY OR PAIN HOLDING YOU BACK?

Expert Physiotherapy, Acupuncture,  
and Pilates for adults and children.  
Weekdays / evenings / weekends.

Call: **07702 847036**  
[enquiries@nebula-physio.co.uk](mailto:enquiries@nebula-physio.co.uk)  
[www.nebula-physio.co.uk](http://www.nebula-physio.co.uk)  
Pendrill Court, Papworth Everard, CB23 3UY

Back Pain  
Neck Pain  
Sports Injuries  
Headaches/Dizziness  
Antenatal/Postnatal  
Joint/Muscle Pain  
Chronic Pain



## Andrina B

the footcare specialist

Nail Cut • Callus • Athlete's Foot • Hard Skin  
Corns • Fungal Infections • Plantar Faciitis  
Orthotics • In-Growing Toe Nail • Foot Massage

To book your appointment contact Andrina on  
**07966 571 686 / e: [andrinab@foot-care.co.uk](mailto:andrinab@foot-care.co.uk)**

**[www.foot-care.co.uk](http://www.foot-care.co.uk)**

Andrina Baldock, Foot Health Practitioner, SAC Dip. FHPP FHPT  
Register for Foot Health Practitioners Member

# TAI CHI

A FREE TRIAL SESSION  
ALL WELCOME

CLASSES IN CAMBOURNE,  
HUNTINGDON, ALCONBURY  
AND ONLINE

[WWW.CAMBS-TAICHI.CO.UK](http://WWW.CAMBS-TAICHI.CO.UK) 07415267908



## iancritten accountancy ltd

ACCA

12 Varrier Jones Drive, Papworth Everard, Cambridge, CB23 3GJ  
01480 831 422 [www.critten.co.uk](http://www.critten.co.uk) [info@critten.co.uk](mailto:info@critten.co.uk)

Providing quality accounting and taxation solutions to individuals  
and all businesses. Cloud accounting solution specialists.

Accounts - Tax returns - PAYE - VAT - R&D claims  
Xero & QuickBooks online certified professional advisors



## Learn Italian with Fun

Conversation  
GCSE  
A Levels  
Advanced

Call or text Stefania  
07437334226

## Quality Bespoke Secure Storage



Easy to open & fast to access. High security with PIN codes, megapixel CCTV cameras & individual room alarms. Choose the size you really need. Store just about anything, for any length of stay. Clean, dry & condensation free. Friendly & helpful service. Viewings by appointment.

**MoreSpace**  
• Home • Document • Commercial

Located at Manor Farm,  
Graveley, PE19 6PH. Mention  
PNV11 to receive £5 discount  
on your first months rental.

[morespacestorage.co.uk](http://morespacestorage.co.uk) Call 01480 830130 to reserve yours today





# Diamond Dog Grooming

01480 880393 or 07707477516

[Jocelyn.Marcroft@googlemail.com](mailto:Jocelyn.Marcroft@googlemail.com)

112 High Street, Yelling, Cambs, PE19 6SD

# FLOOR COVERINGS



Cambridgeshire's largest flooring showroom est. 1996

Luxury Vinyl Tiles (LVT)  
Laminate - Hardwood & Natural  
Over 3500 Carpet samples  
Cushion Vinyl

01223 233233  
[www.floor-coverings.net](http://www.floor-coverings.net)

FREE no obligation quotes

Showroom:  
Unit 31-32 Dry Drayton Industries, Scotland Road, Dry Drayton,  
Cambridge CB23 8AT Open: Mon - Sat 9-5



## Ash Croft Veterinary Surgery

169 St Neots Road  
Hardwick  
Cambridge  
CB23 7QJ  
Tel: 01954 210250

Unit 1, Pendrill Court  
Ermine Street North  
Papworth Everard  
CB23 3UY  
Tel: 01480 831615

Consultations by Appointment Only

A comprehensive service for domestic pets including:  
Surgery; Micro-chipping; Acupuncture & Reptile Clinic

[www.ashcroftvet.co.uk](http://www.ashcroftvet.co.uk)

**GREATER CAMBRIDGE CONSTRUCTION**

Builders & Home Improvement Specialists  
Call Now For Your Free Quote

- Design and Build Service
- Extensions & New Build Properties
- Complete House Renovation & Refurbishment
- Garage Conversions
- Bathroom & Kitchen Fitting
- General Building Work

07927 316104  
[horse@gcclimited.co.uk](mailto:horse@gcclimited.co.uk)  
[greatercambridgeconstruction.co.uk](http://greatercambridgeconstruction.co.uk)

**GREATER CAMBRIDGE CONSTRUCTION**

TRUSTMARK  
Cheektrade

# GM SHARP LANDSCAPES LTD

## ALL ASPECTS OF HARD & SOFT LANDSCAPING

FENCING & DECKING  
PATIOS & GARDEN WALLING  
BLOCK PAVING & DRIVEWAYS  
PONDS & WATER FEATURES  
TURFING & ARTIFICIAL LAWNS  
GARDEN DESIGN & LIGHTING  
COMPLETE GARDEN MAKEOVERS

### FREE ESTIMATES & ADVICE

01223 751175 07800 577617  
[gmsarplandscapes@googlemail.com](mailto:gmsarplandscapes@googlemail.com)

SEE OUR WORK ON facebook

[www.gmsarplandscapes.co.uk](http://www.gmsarplandscapes.co.uk)

**R.D.B. FLOORING** Specialist in all contract floor coverings

**SUPPLIERS & INSTALLERS OF**

- QUALITY CARPETS • SAFETY FLOORING • VINYLAYS
- FLOOR SCREEDS / LATEXING • REPAIRS AND RE-LAYING • LINO
- CORK TILES • CERAMIC TILING • CARPET TILES • LAMINATE FLOORING

**HOME SELECTION SERVICE**  
For all Contract and Domestic Installations

**CARPET CLEANING SERVICE**  
Using the Host Dry Extraction System

Tel: 01480 831886 Mobile: 07970 256237 Fax: 01480 830997  
[rdbflooring@lineone.net](mailto:rdbflooring@lineone.net) [www.rdbflooring.co.uk](http://www.rdbflooring.co.uk)

Measuring, estimating and expert advice **WITHOUT OBLIGATION**

**DSSelectrical**

Local Domestic Electrical Contractors

- Garden Lighting specialists
- Electrical Vehicle Charging Points
- Fuse-board replacement and upgrades
- Heating System Wiring and Fault Finding
- Additional Sockets and Lighting, just to name a few....

\*Contact Dan for a free estimate. Please visit our website for more information\*  
0800 019 7992 / [info@dssselectrical.co.uk](mailto:info@dssselectrical.co.uk) / [dssselectrical.co.uk](http://dssselectrical.co.uk)



**“FROM YOUR IMAGINATION TO OUR HANDS”**

**Matt Seaber Shinn**

**07754573876**

**msscarpentry@hotmail.co.uk**

Check out our website to be inspired and let us turn your home dreams into reality

**msscarpentry.com**



**JASON KIRBY**

*Professional Painting & Decorating Ltd*

*A Professional Service from Start to Finish*

**Tel: 01954 211775**

**www.jasonkirbyltd.co.uk**



**Skilled Carpentry and Joinery**



- Composite and Timber decking supplied and fitted
- Garden fences built and repaired
- Laminate/engineered wood flooring laid
- Kitchens and bathrooms fitted
- Painting and Decorating to a high standard

Contact Paul or Martin for a free quotation on **home@cambournecarpentry.co.uk** or Tel: **07947 316104**

**Gott Plumbing & Heating**

**07805 650940**

**www.gottplumbingandheating.co.uk**



For high quality services at affordable prices, contact Ed Gott for all your plumbing, heating and oil boiler needs.

- 🔥 Oil Boiler Specialist
- 🔥 Plumbing
- 🔥 Central Heating
- 🔥 Burst Pipes
- 🔥 Leaking Taps
- 🔥 Bathroom Refit
- 🔥 Hot Water Cylinder
- 🔥 Wet Room Installations
- 🔥 Kitchen Installations

Email: **info@gottplumbingandheating.co.uk** **Reliable local plumber based in Yelling.**



**Jim Edwards**

Gas appliances, Plumbing and Heating

Gas Boiler service from £59.  
Bathrooms ,Showers, Cookers, Fires, Taps,  
Gas safety checks, landlord certificates,  
Local Friendly service, All plumbing work undertaken  
01954 267054 07870520702  
jim-edwards@live.co.uk  
www.cambridge-plumber.co.uk

**NC AND PLUMBING HEATING**

Gas, LPG, Oil servicing, installation and repairs, all plumbing works undertaken



**Tel: 01223 870580**

**www.nutcombecambridge.co.uk**





# J. HALSTEAD

— PLUMBING & HEATING —

INSTALLATIONS • REPAIRS • SERVICING

Complete Bathroom Installations  
 General Plumbing Repairs  
 Pipework and Drainage for Kitchen Appliances  
 Radiators and Towel Rails Installed  
 Power Flushing



CALL JOHN FOR A **FREE QUOTE**  
 07570 387 684 • 01480 830 329  
[www.jhalsteadplumbing.co.uk](http://www.jhalsteadplumbing.co.uk)



## CAMBOURNE VEHICLE SERVICES

The Drift, Bourn, Cambridge CB23 2TB

**Tel: 01954 719039**

[www.cambournevehicleservices.co.uk](http://www.cambournevehicleservices.co.uk)  
[info@cambournevehicleservices.co.uk](mailto:info@cambournevehicleservices.co.uk)

- \* **SERVICING FOR ALL MAKES**
- \* **M.O.T's (UP TO 3.5 TONNES)**
- \* **EXHAUST SYSTEMS SUPPLIED AND FITTED**
- \* **TYRE SERVICE - SUPPLIED AND FITTED**
- \* **COURTESY VEHICLE AVAILABLE (BY PRIOR ARRANGEMENT)**
- \* **AIR CONDITIONING SERVICE**

**ALL VEHICLE WORK  
 UNDERTAKEN**



**FREE collection and delivery**

*Quality Vehicle maintenance  
 adjusted to suit your pocket*

Free collection and delivery applies to the local area only

# GRAVELEY GARAGE TEST CENTRE LTD

**MOT WHILE U WAIT  
 CLASSES 1 2 3 4 5 7**

- Servicing to all makes of vehicle
- New bay for servicing motor bikes
  - Tyres and Exhausts supplied and fitted
  - Free courtesy cars
  - Comfortable waiting area
  - Free tea / coffee

**Mon to Fri 8 to 6 - Sat 8 to 4**

**01480 830462 / 831058**

HIGH STREET, GRAVELEY,  
 ST. NEOTS - PE19 6PL

[enquiries@graveley-garage.co.uk](mailto:enquiries@graveley-garage.co.uk)

[www.graveley-garage.co.uk](http://www.graveley-garage.co.uk)

*Produce this advert to get £4.00 OFF  
 the current price of your MOT*



Free Collection & Delivery Service | Courtesy Cars Available\*



Email: [contact@agmotors.net](mailto:contact@agmotors.net)  
 Unit A5 Atria Court | Papworth Everard  
 Papworth Business Park | Cambridge | CB23 3GY

**01480 831807**  
[www.agmotors.net](http://www.agmotors.net)







## Hope Farm Knapwell

From the team at hope farm, we're sending in an update for how things have been over winter including the weather (wet!), how the crops are going, and what the wildlife is up to too. The team being Sophie (assistant manager), Duerden (who leads the monitoring on farm), Clara (who works on the agroforestry and carbon research projects), our contracting team (who you'll see on the tractors) and myself, Georgie (farm manager).

A quick sum of this winter would be to say that we've had more than enough rain for the time being! Like every farmer in the area for sure, it has been a testing harvest, autumn and winter, with rain delaying us at every move. Late harvested crops can mean lower quality, but also push back preparations for growing cover for the following year, and cover crops (sown in winter to improve soil health and as grazing fodder rather than to be harvested for food). Normally our winter crops would all be in the ground by November, but this year we had the last field drilled in early February - which will no doubt have an impact on the yield going into 2024 harvest. Even our habitat management has been harder, getting bales off the margins that are baled as part of our management to help ensure wildflowers grow in abundance in future years. It wouldn't be a report from a farm on a winter like this without a quiet complaint about the weather... but this really has been one for the record that we hope won't be matched for a while!

On a brighter note, some of the crops that we tend to drill in late summer like our oilseed rape (grown on the big field bordering Elsworth), is growing well. This field looks different depending on which area you are in, and there are lots of canes about as well, as it forms a trial that we are running we ADAS. This trial aims to look at ways we can grow oilseed rape more sustainably, by providing alternatives to insecticides (which we haven't used on the farm for over 5 years) and promoting natural pest control. A subtle plug here for anyone interested, to say that we do have our rapeseed oil available to buy if you are ever going past the farmhouse in Knapwell or on the RSPB shop online!



At the top of the field bordering Elsworth, we had sheep grazing cover crops for the first time in many years. It was great to have them on even if for a short period, to graze down the covers, reduce our need for herbicide use and provide manures that will feed the soil. Next year, we hope to get cover crops drilled earlier so that we have more biomass available and can graze them for longer across more areas of the farm. Thank you to everyone with their dogs who has kept them on leads whilst we had sheep here, from us and the grazier. It really does help to keep both sheep and dogs safe during that time.

Duerden has been busy this winter organising the winter bird counts and processing data from the summer monitoring. He has also found some interesting rarities around the farm. We are lucky in the Knapwell – Elsworth – Connington area, to be blessed with rare mature Elms that are hundreds of years old. With that comes support for some specialist invertebrates that thrive on Elms in hedgerows or on the young suckers from mature Elms. The old pollards are also well worth looking out for too.

Our Agroforestry trial (the field next to Knapwell with rows of fruit and nut trees planted within the arable crop) is going strong, thanks to the help of a fantastic group of volunteers from the area – thank you! With this trial, we are looking at integrating trees within an arable field, and monitoring the impact it has for carbon sequestration, biodiversity, food production (as they are fruit and nut trees) and the farm business. This way of farming has been used by many farmers across the world as a means to deliver more diverse outputs from a field, and we are contributing to the research to identify how well it can work in the UK. If anyone is interested in joining the community working to help look after the trees (around 1000 of them!) then do get in touch with Sophie (Sophie.arnold@rspb.org.uk)

That's all from us for this time, but hope to see you around the farm

## On Your Door Step

Photos from Papworth Residents





## South Cambridgeshire District Council – Caxton and Papworth Ward District Councillor's Monthly Report – March 2024



### Finances and Council Tax

The council budget for 2024-2025 came to Full Council for approval at its meeting on Tuesday 27th February. Because of print deadlines, I am writing this before the meeting and not all proposals mentioned below may have been approved.

If approved, the district council precept will increase by £5 a year on a Band D property, or slightly more than 3%. Most of you will be aware that South Cambs collects taxes on behalf of other organisations too, such as central

government, the County Council, parishes and the Combined Authority. Consequently, the overall increase in monthly payments will be significantly more than 50p.

Reserves will be topped up where prudent and, unlike many other councils, no cuts to services are proposed. Additional funding will be allocated to combating fly tipping, including prosecuting offenders where they can be identified. Net zero projects will also see an uplift in funding. A line of credit will be extended to Ermine Street Housing, a wholly owned subsidiary of the council, to purchase properties for housing individuals who have been made temporarily homeless. Improvements are planned to IT, allowing more transactions with the council to be completed online.

The Combined Authority (the mayor's office) is proposing to triple its Band D precept from £12 a year to £36. The additional funds

are intended for improved services, two of which will be of interest in our village. One is "engagement with the incumbent operator of the X2 and X3 to assess options for improvements". The other is a trial of Demand Response Transport in South Cambridgeshire – we've occasionally seen Ting buses in Papworth, but those were part of the Huntingdonshire trial.

Happy Birthday South Cambs District Council

2024 is the 50th anniversary of the creation of South Cambridgeshire District Council, as the result of the merger of Chesterton Rural District and South Cambridgeshire Rural District on 1st April 1974. Since its formation, the council has occupied two offices in Cambridge before settling in its current headquarters in Cambourne in 2004. To celebrate its birthday, the council will be holding a civic reception for parish chairs and other dignitaries on Wednesday 20th March at 6:00PM. Other events to follow.

### Fly Tipping

A reminder you can report fly tipping online here:

<https://www.scambs.gov.uk/recycling-and-bins/keeping-your-community-clean/fly-tipping>

South Cambs will clear illegally dumped waste, and will also prosecute offenders where they can be identified.

Peter Sandford

20 February 2024

Email: [cllr.sandford@scambs.gov.uk](mailto:cllr.sandford@scambs.gov.uk)

Mobile: 07985 425414



Frosty Webs - Phil Hill





# Papworth Tennis Club

## Membership 2024/2025

The Papworth Tennis Club membership year for 2024/25 begins on 1st April 2024 and runs to 31st March 2025. Membership fees are as follows:

Adults: £110

Family: £230

Juniors: £50

Student: £75

Parent/Guardian one/both: £32/£45

Papworth Tennis Club welcomes members of all ages and abilities. Membership of the club entitles you to unlimited play throughout the year subject to court availability and at Club Nights (Monday and Wednesday evenings, Thursday afternoons and Sunday mornings). The membership includes free access to floodlights throughout the year.

Advanced players have the opportunity to compete in the Cambridgeshire Tennis League against other local clubs, plus there are club tournaments and organised matches on offer throughout the year to suit all abilities.

Visitors are very welcome. An adult member may bring up to three guests on any one day, with each guest allowed a maximum of four visits per year. The guest fee per visit is £5 and should be left in the sealed box on the corner of the clubhouse.

For membership enquiries please contact John Peal, Membership Secretary, at [membership@papworthtennis.co.uk](mailto:membership@papworthtennis.co.uk)

For coaching enquiries please contact John Garland:

07926 073663 [jj.garland@btinternet.com](mailto:jj.garland@btinternet.com)

For general information please visit the club website at: <https://clubspark.lta.org.uk/PapworthTennisClub>

## PAPWORTH BOWLS CLUB

### NEW MEMBERS WELCOME

Why not come take a look?

----

We are always looking for new members to join our friendly club. With no pressure as a member, you can play just for fun, join in with our internal club competitions and play in the Huntingdon & District League if you wish.

----

Bowls season runs from May to September  
1<sup>st</sup> Year membership / new member £20.00  
Juniors up to 25 / full time education £15.00

----

### FANCY GIVING IT A GO?

Secretary: David Richardson – 07419 178817  
Chairman: Bryan Johnson – 07985 590130  
Treasurer: Ann Rone – 07500 681858

## Running London Marathon for Stonewall . . . Terri Sansom

As we come to the end of LGBTQIA+ History Month 2024, I thought it would be a good time to mention that I was lucky enough to get a Charity place in this years TCS London Marathon running for Stonewall UK.

When I was considering applying for a charity place, after two inevitably failed years of ballot application, Stonewall was at the top of my list. I admit it was a shock to get a place from my first application. They said that they liked my personal story when I applied

There were a few reasons I wrote about, both very personal, for which I am grateful to them as an organisation for promoting. A lot of people run for other people, which I am absolutely doing, but I'm also running for me. The first openly LGBTQIA+ person who became a close friend, when I was 18 was a truly important person in my life. It's not an understatement to say that I don't know whether I'd still be here if not for him.

Stonewall is historically a known name in LGBTQIA+ and through good times and bad they have spoken up for people across the LGBTQIA+ spectrum and continue to change and grow as an organisation. There are frequently stories in both the local and national news about hate crime towards LGBTQIA+ individuals, making Stonewall's work more important than ever.

My training in earnest started in January, I won't lie, even as a regular runner it's hard, but as one of the trainers I follow says, "it's meant to be hard" Honestly one of my main focusses at the moment is staying injury free, I'm notoriously clumsy and accident prone, so that's a challenge.

I fell proud and lucky to have one of their places at London on 21st April.

The link to my sponsorship page is below, any sponsorship or sharing is really appreciated.

<https://2024tcslondonmarathon.enthuse.com/pf/terri-sansom>



COMING SOON

## HCCN's BIG AFTERNOON TEA

MAY 2024

THROUGHOUT THE MONTH OF MAY  
WE ARE ASKING EVERYONE TO  
HOST THEIR OWN AFTERNOON TEA  
IN SUPPORT OF HCCN

